

# IMPROVING THE DOWNTOWN ST. LOUIS CID



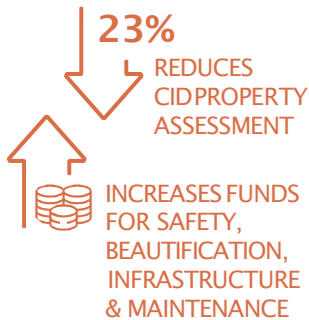
DOWNTOWN COMMUNITY IMPROVEMENT DISTRICT

Your Downtown St. Louis Community Improvement District (CID) is a community organization representing the 180 square blocks that make up the heart of the city we love. The CID supplements city services to ensure that Downtown is an attractive place to live, work and visit.

## WHAT CHANGES CAN THE COMMUNITY EXPECT FROM THE CID?

Through surveys and meetings with community members, the CID sought input on ways to improve the CID. Based on your feedback, the CID will make changes for 2021.

CID services will be streamlined to focus on safety, beautification, infrastructure, and maintenance.



Your CID property assessment will be reduced by 23 percent (beginning in 2022), and at the same time, funding for safety, beautification, infrastructure, and maintenance will increase as the CID transitions away from marketing and economic development services.

A new CID board will include a smaller and more diverse group of residents, business owners, and property owners who have a stake in our Downtown community. The CID will also have its own staff reporting to the board.

## HOW CAN YOU ENSURE THESE CHANGES ARE MADE AND THE CID CONTINUES TO IMPROVE OUR COMMUNITY THIS YEAR AND BEYOND?

Residents and businesses will receive two petitions to amend the CID, including the CID Assessment petition and CID Term Extension petition. If you are a property owner in the CID, review the petition packet and follow the instructions for signing and returning the petitions. If you are a tenant, share this information with the property owner and encourage their support of the Downtown CID.

## WHAT DOES THE CID BRING TO DOWNTOWN ST. LOUIS?

### SAFETY

Because of CID funding, the Downtown neighborhood has the only St. Louis Metropolitan Police Department neighborhood dedicated Bike Unit in the City of St. Louis. The bike unit adds a friendly presence in our community while helping to keep our streets safe.



POLICE BIKE UNITS



SECURITY CAMERAS



ULTRA-BRIGHT STREETLIGHTS

### BEAUTIFICATION

The CID helps our shared urban space sustain a welcoming environment throughout the seasons.



INSTALLS PLANTERS



MAINTAINS GREENERY



PLANTS TREES



INSTALLS HANGING BASKETS

### INFRASTRUCTURE

While the city remains responsible for basic infrastructure, the CID can enhance its surroundings.



DECORATIVE LIGHTING



PUBLIC ART



REDEVELOPING STREETSCAPES

### MAINTENANCE

The CID maintains street-level cleanliness in highly visible public spaces.



MAINTAINS TRASH CANS



CLEANS SIDEWALKS



REMOVES FIRST-FLOOR GRAFFITI



REPORTS TO CSB



To learn more about advantages to amending the current CID and how to sign the petitions, visit [www.downtownstlciid.org](http://www.downtownstlciid.org).